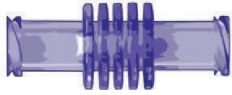
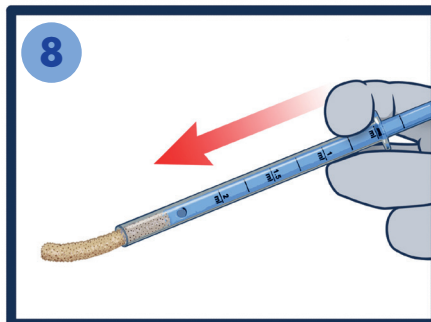
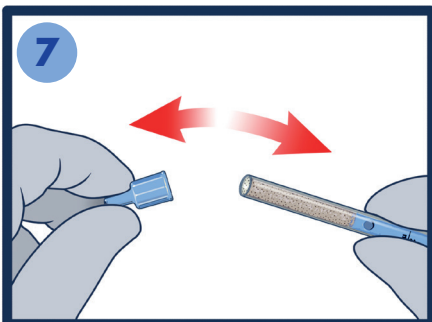
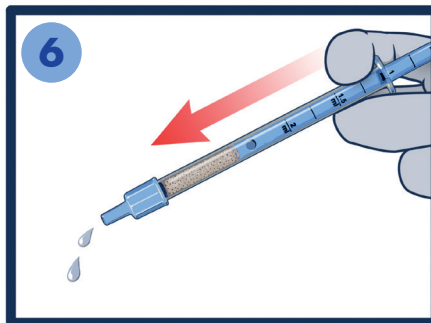
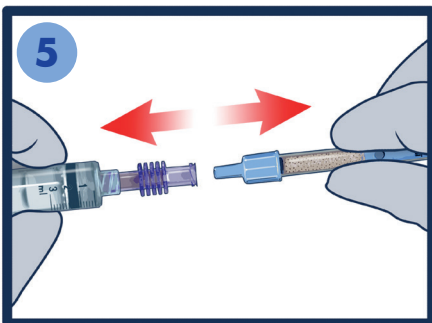
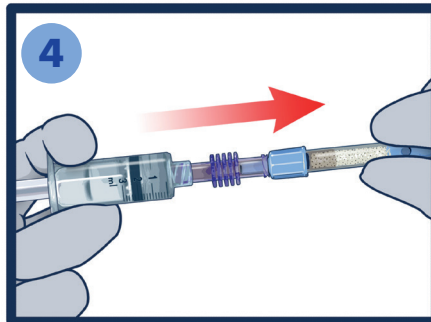
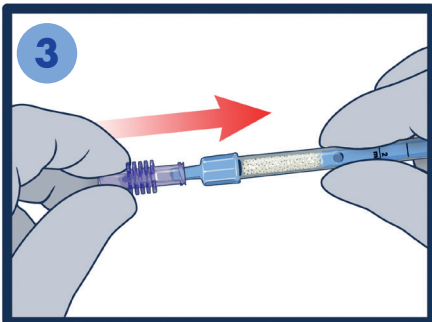
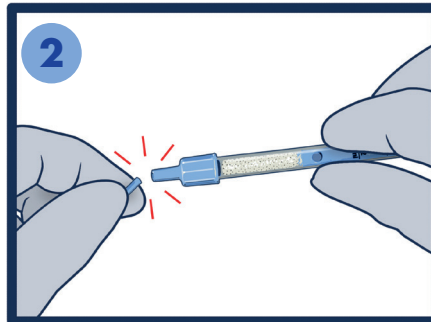
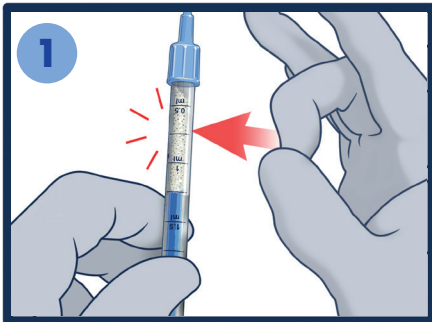


Luer lock* connector



Syringe pre-filled with BIOBank bone powder



1 Pull the plunger back (≈ 0.25 ml) and tap the syringe to decompress the powder

2 Break off the breakable tip of the plug

3 Connect the provided Luer lock connector to the syringe filled with powder

4 Connect a syringe filled with a sterile sodium chloride solution. Aseptically transfer the liquid to the plunger to completely hydrate the powder

5 Disconnect the BIOBank syringe

6 Wait few minutes then evacuate the excess liquid by pushing the plunger

7 Remove the plug

8 Push the plunger to inject the rehydrated BIOBank bone powder into the graft site

*The Luer lock connector is a sterile medical device provided as an accessory